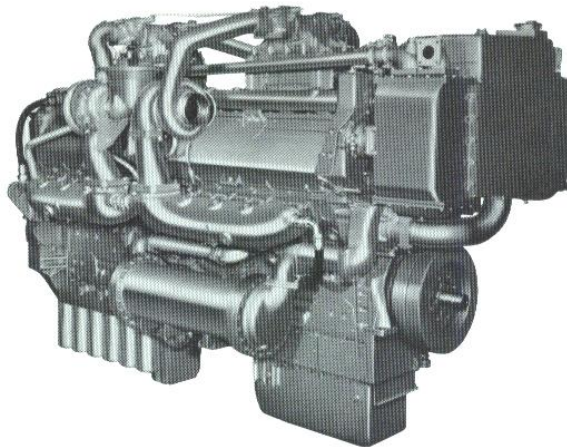


DETROIT DIESEL Series I49

**Marine Model
Pleasure Craft**

16V-149TI 2000 BHP



General Specifications

Basic Engine	16V-149TI
Model	9162-7411
Description	Turbocharged-Raw water intercooled with Bypass Blower
Number of Cylinders	16
Bore and Stroke	5.75 in x 5.75 in (146 mm x 146 mm)
Displacement	2389 cu in (39.18 liters)
Compression Ratio	15.0 to 1
Weight (dry)	12370 lbs (5611 kg)

Rated Power Output—Maximum

Injectors	240
Gross Power	2000 BHP (1492 kW) @ 1900 RPM
Net Power	1935 SHP (1444 kW) @ 1900 RPM

Rated Power Output—Intermittent-Maximum

Injectors	190
Gross Power	1800 BHP (1343 kW) @ 1900 RPM
Net Power	1740 SHP (1298 kW) @ 1900 RPM

Equipment Specifications

Alternator—24 volt, 65 amp
Cooling System—Cast iron expansion tank and dual raw water pumps.
Crankshaft Pulley—Poly vee grooves (optional)
Engine Mounts—Resilient mounts for both engine and marine gear
Exhaust System—Cast jacket water-cooled manifolds
Flywheel Housing—SAE #0
Fuel System—Cam operated unit injectors with low pressure USCG type A external hoses, fuel filters and cooler
Governor—Hydraulic, SG type
Lube Oil Filter—Full flow, spin on
Oil Pan—Cast iron, designed for 0°-20° inclination angle, rear sump
Starting Motors—Two 24 volt electric

Rating conditions: ISO 3046, SAE J1349, SAE J1228
77°F (25°C) and 29.31 in. Hg. (99kPa) Barometer (Dry)

For a complete listing of standard and optional equipment, consult your authorized Detroit Diesel Corporation representative.

Photograph illustrates a typical marine engine

